

## Appendix E – Project Team Meeting Minutes

## MEETING MINUTES

**Project:** Pre-Design Scoping Study for 2-8300, 2-8631, 2-8632

**Purpose:** Project Team Meeting

**Place:** Kentucky Transportation Cabinet (KYTC), District 2 Conference Room, Madisonville, Ky.

**Meeting Date:** April 18, 2011

**In Attendance:**

Nick Hall	KYTC-D2 Planning
Kevin McClearn	KYTC-D2 C.D.E.
Everett T. Green	KYTC-D2 Project Development
John Rudd	KYTC-D2 Design
Steve Ross	KYTC-CO Planning
Jill Asher	KYTC-CO Planning

**INTRODUCTIONS:** Jill opened the Project Team Meeting by discussing the purpose of the DNA Studies. Similar studies to these, formerly known as First Look Studies and Pre-Design Scoping Studies, have been done in the past by some of the districts. It is anticipated that a study of this type will be done for every project preceding the design phase if there is no planning study associated with the project. The nine elements of Purpose and Need as defined by NEPA will be addressed and used to create a purpose and need statement for each project. Pre-Design Scoping Studies will also provide more defined project scopes, cost estimates for possible alternatives, potential environmental impacts, and other information that will be of assistance in the Phase I Design process. This study was done for Item Numbers 2-8300, 2-8631, 2-8632 in Daviess County. A handout of the meeting presentation was given to all meeting attendees. A copy of the information presented is attached to the meeting notes. A sign-in sheet was also passed around.

During the meeting, each project was discussed separately. The meeting notes will also present each project separately. Please refer to the attached presentations for each project for information discussed. The following is information from discussions during the meeting that are not documented on the attached presentations.

### **Item #2-8300, KY 54 in Daviess County**

- Kevin McClearn gave a brief overview of some of the work planned at the ramps of the US 60/KY 54 intersection and the US 60 Extension that is currently under construction. These projects have separate funding sources than Item #2-8300. The SE quadrant of the US 60/KY 54 intersection has developed rapidly and 67 acres are currently being developed in the SW quadrant
- There is congestion in the area of the five-lane section of KY 54 near the bypass especially in the area of the Highland Elementary School. When school is in session, the back-up from the school reduces the roadway to one through lane. In

the past the ramp backed up to US 60(formerly US 60 Bypass) during school time. A loop was put in place to give added green time to the signal in the afternoons to eliminate back-ups onto US 60.

- Of the three projects discussed, this one is most likely to be designed first.
- There was a drop in ADT for what is referenced as Section 2 in the attached presentation. Nick stated that this may be due to a back way to Wal-Mart opening up for local residents.

#### **Item #2-8631, KY 144 in Daviess County**

- In 2005, coal was being hauled regularly on this road. There was a safety concern, especially for school busses, sharing this road with large coal haul trucks.
- In 2005 The Daviess County Fiscal Court asked KYTC if they could provide construction funds if the county used its coal severance money for design, property acquisition, and utility relocation to straighten out eight curves near Pleasant Valley Road. Since then, the amount and frequency of coal hauled on the road has decreased. It is unknown if the County is still willing to provide money for the project.
- Item #2-8631 is additional funds for Item #2-194.
- The preferred alternative for this project is the revision of the curves that have been identified. There is not enough money allocated to improve the length of the corridor.

#### **Item #2-8631, KY 1554 in Daviess County**

- This project was probably placed in the Highway Plan by a former Legislator from Sorgho.
- Although the project calls for a new route, the crash and traffic data do not support the need. The probable location of the new corridor may result in property owner disputes.
- Widening the existing corridor would result in major impacts to residents in the study area.
- This project has a PIF, but Nick believes it is on the inactive list.
- Improvements to the intersection of KY 1554/KY 56 may be a more logical approach.

**NEXT STEPS:** The district agreed to provide planning level, phased cost estimates for the alternates they would like to see move forward.

The meeting was followed by a visit to the site by Central Office Planning staff.

**END OF MINUTES**

KY 1554  
Daviness County  
Item #2-8632.00



Data Needs Analysis  
April 18, 2011

Project Limits



## 9 Elements of a Purpose and Need Statement

- Legislation
- Project Status
- System Linkage
- Modal Interrelationships
- Social Demands or Economic Development
- Transportation Demand
- Capacity
- Safety
- Roadway Deficiencies

### Legislation

#### 2010 General Assembly's Enacted Roadway Plan

- **Item #2-8632.00, Daviess County**

<u>Phase</u>	<u>Fund</u>	<u>Year</u>	<u>Estimate</u>
D	SB2	2012	\$660,000

CONSTRUCT A NEW SECTION OF KY-1554 FROM AUDUBON PARKWAY TO KY-56 (10CCN)

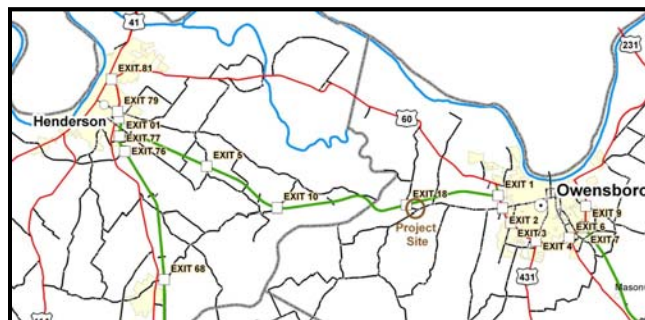
Milepoints: From: 0 To: 0.648

Purpose and Need: RELIABILITY/ NEW ROUTE(O)

## Project Status

- Design funds authorized on March 30, 2011.
- This project is on the inactive UNL list.

## System Linkage



- KY 1554 connects KY 56 in the community of Sorgho to the Audubon Parkway. The parkway connects Owensboro and Henderson.

### KY 1554 Road Classifications

- Functional Classification – Rural Minor Collector
- State System – Rural Secondary
- Truck Weight Classification – A
- Access - By Permit

### Modal Interrelationships

- Designated Bike Route – Ramblin' River Tour
- There is no public transit on this route.

## Social Demands & Economic Development

### Social Demands

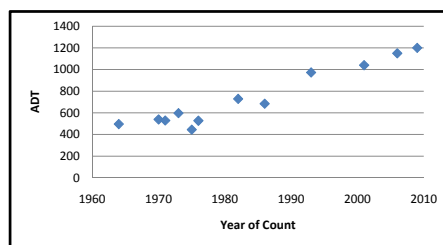
- ?

### Economic Development

- There is no known future development that may affect this route.

## Transportation Demand

- **The current ADT is approximately 1,200.**



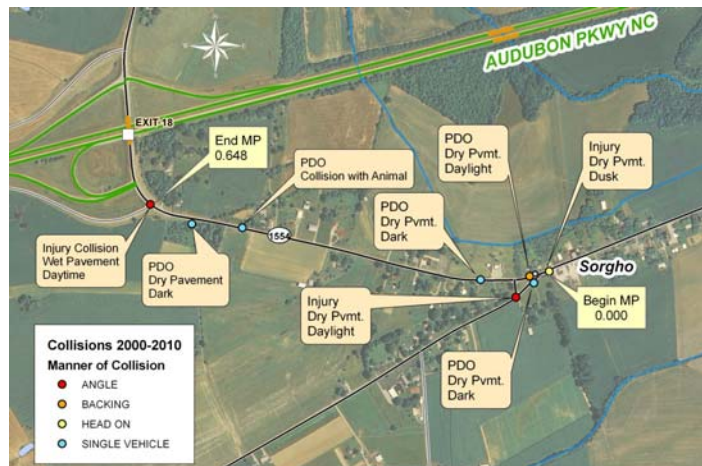


## Capacity

- The current capacity of the existing roadway should be acceptable for the near future. VSF was not available.

## Safety

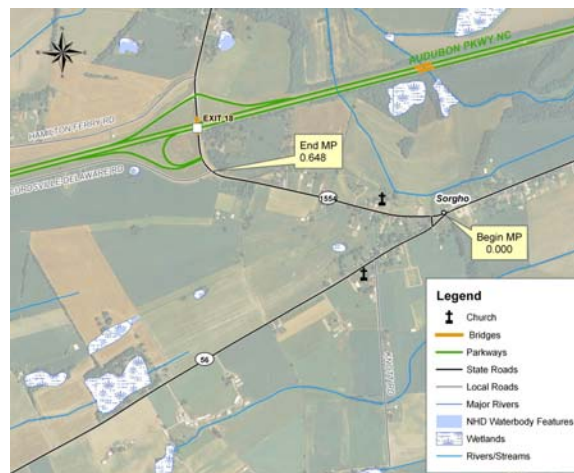
Collision Locations (over 10 Yrs - January 1, 2000 to December 31, 2010)



## Roadway Deficiencies

- Existing Roadway Data
  - 9-11 Ft. Lanes
  - 3-6 Ft. Shoulder
  - Max Grade = ??
  - Min Radius = 490 Ft.
  - 35-55 MPH posted speed limit
  - Adequacy Ratings not Available
- Geometric Practices for Rural Collectors
  - 11 Ft. Lanes
  - 5 Ft. Shoulders
  - Max Grade = 7%
  - Min Radius = 1065 Ft.

## Environmental Considerations



## Environmental Considerations (cont.)

- Environmental Overview noted:
  - Phase 1 archaeology survey will be required with additional r/w or permanent easement
  - Several Threatened or Endangered Species in the area
  - Several potentially historic homes in the viewshed of the project area

## Utilities



Water  
South East Daviess County Water

Electric  
Kenergy  
Kentucky Utilities

Gas  
Atmos Energy

Telephone  
ATT

Television  
Time Warner Cable  
KDL Communication



# Observations

(Video & Pictures)

## Audubon Interchange and Curdsville-Delaware Road Intersection



Audubon Interchange and Curdsville-Delaware Road Intersection



KY 1554 Cross Section Change



KY 1554



KY 1554/KY 56 Intersection



### KY 1554/KY 56 Intersection



### Possible Corridor?



## Possible Alternatives

- No Build
- Construct new corridor to the west of the existing corridor
- Widen existing route
- Improve intersection at KY 56

## New Corridor



Other possible Corridors?



## Widen KY 1554



## Improvements to KY 1554/KY 56 Intersection



Realign Intersection



Better Signing

## Potential Conflicts

- Utilities
- R/W issues

## Purpose & Need Statement(s)

- Needs
  - Roadway and Shoulder do not meet recommended widths
  - The intersection at KY 56 is awkward and confusing for a driver who is unfamiliar with the area
- Purpose
  - The purpose of this project is to improve the safety and geometrics at the intersection of KY 56 and KY 1554.